

# Apache

1985  
SOLID STATE  
Folding Travel Trailers

There is NO  
Comparison.

FROM THIS...



... TO THIS IN MINUTES



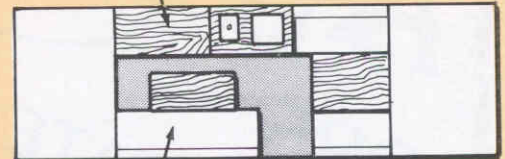


## Ramada

The Ramada's popularity is attributable to its capacity to sleep 8 people and its 14.5 sq. ft. of usable counter-top surface, and oodles of storage space below. The gaicho is a couch, a dining area and opens into a 3' x 6' bed. Its roominess and open feeling are enhanced by the 62 sq. ft. of windows.

You won't ever feel closed-in in a Ramada.

STORAGE



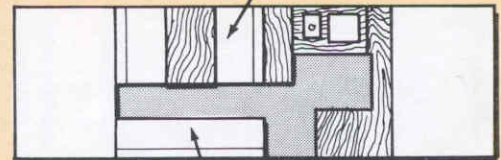
GAICHO



## Ranger

Wow, what a kitchen! It's functional and provides plenty of counter space (22 sq. ft.). The side dinette offers a different perspective of the outdoors through Apache's extra large windows. This floor plan also provides easy access to both beds. The adjoining couch and dinette make for an ideal conversation area, and the dinette quickly converts into a whopping 6'W x 6'5'L bed.

SIDE DINETTE



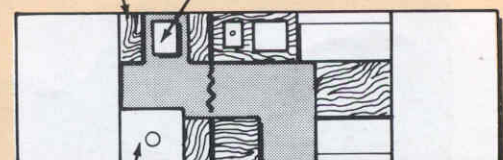
COUCH



## Royal

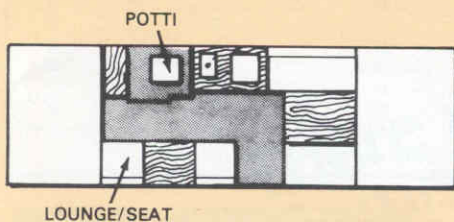
It would take a separate brochure to adequately cover all of the Royal's features. Start with a large shower, 6 gallon hot water heater, demand water pump, deluxe 30 amp converter, range hood, a wardrobe and much more. Plus a solid wall between dressing room and living area to give you two separate rooms for privacy when you want it. Everything is here including the kitchen sink.

WARDROBE POTTI

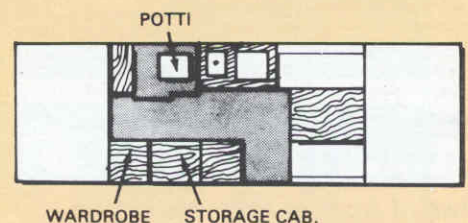
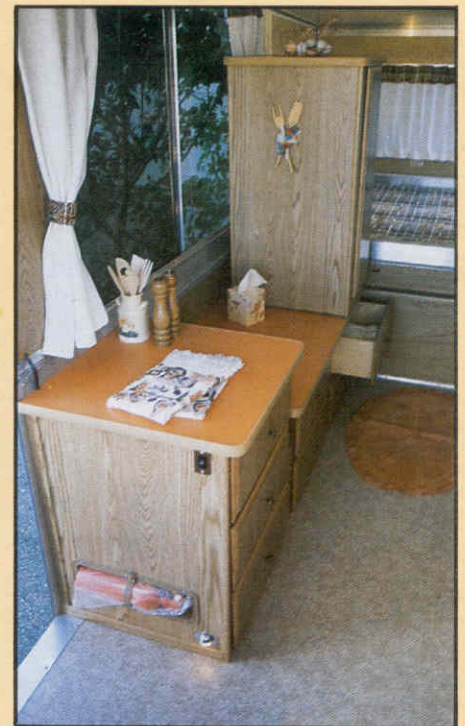


SHOWER

# Cimarron I



# Cimarron II



Both Cimarron models feature a unique side bathroom fully enclosed with solid walls. It provides you with the necessities and privacy you wouldn't expect to see in a folding trailer. A portable toilet is standard or you can add the optional flush toilet with built-in 9 gallon holding tank. Fresh water is supplied through the demand water pump.

Choose the Cimarron I with the two-seat lounge and storage/counter between for more seating capacity, or pick the Cimarron II, if it's more storage and a wardrobe that you want.

## Why You Should Invest in Apache Rather than a Conventional Travel Trailer . . .

**\*Towing Ease.** The lighter weight and lower profile of Apache trailers make them more easily, and economically, towed by a greater range of motor vehicles.

**\*Living Area.** Apache gives you the living area of a 24' travel trailer. And the permanent bed areas eliminate the need to daily make dinettes into beds and back again.

**\*Value.** The innovative engineering that goes into every Apache to give you more quality features costs more, and is worth more, just as the cost of a convertible auto is higher than that of a standard sedan.

## . . . or a Regular Folding Trailer with Tenting.

**\*Security and Comfort.** The Solid State construction provides a sturdy, secure and comfortable home to make your camping experiences memorable ones.

**\*Features and Construction.** Apaches are loaded with special features like premium grade exterior plywood floors topped with attractive high-grade vinyl. Solid oak frames the cabinet doors, and all tables, counter tops and cabinets are made of quality plywood. You won't find any flakeboard in an Apache.

**\*Value.** As the saying goes, you get what you pay for. These outstanding features, plus Solid State construction, mean you get more out of your Apache while you own it and more in dollars, if you sell it.



# SPECIFICATIONS

	Ramada	Ranger	Cimarron		Royal		Ramada	Ranger	Cimarron		Royal
			I	II					I	II	
<b>DIMENSIONS</b>											
Length Open .....	21'5"	21'5"	21'5"	21'5"	21'5"	Mounted Door Step .....	S	S	S	S	S
Length Closed .....	16'4"	16'4"	16'4"	16'4"	16'4"	Open Wheel Wells .....	S	S	S	S	S
Width .....	79"	79"	79"	79"	79"	Spare Tire Mounting Bracket .....	S	S	S	S	S
Travel Height .....	53.5"	53.5"	53.5"	53.5"	53.5"	Bumper .....	S	S	S	S	S
Ceiling Height .....	76"	76"	76"	76"	76"	Roof Vent .....	S	S	S	S	—
Hitch Weight* .....	172	180	180	175	164	Awning Rail .....	S	S	S	S	S
Axle Weight* .....	1598	1500	1555	1630	1724	Electric Brakes .....	S	S	S	S	S
Gross Vehicle Weight .....	2400	2400	2400	2400	2400	Insulated Roof & Upper Sides .....	S	S	S	S	S
Tires 20.5 x 8 x 10" .....	S	S	S	S	S	Built-In ABS Stoneshield .....	S	S	S	S	S
2" Coupler .....	S	S	S	S	S	<b>ELECTRICAL</b>					
Square Feet of Floor .....	74	74	74	74	74	15 amp Converter .....	S	S	—	—	—
<b>INTERIOR FEATURES</b>											
54" Wide Beds .....	S	S	S	S	S	20 amp Converter .....	—	—	S	S	—
Overhead Cabinet .....	N/A	N/A	N/A	N/A	S	30 amp Converter .....	—	—	—	—	S
Designer Fabrics .....	S	S	S	S	S	25 Foot Power Cord .....	S	S	S	S	S
Portable Toilet Storage .....	S	S	S	S	S	Night Light .....	1	1	2	2	2
Portable Toilet .....	O	O	S	S	S	12 Volt Dome Lights .....	6	5	7	7	6
Large 32" Square Shower .....	N/A	N/A	N/A	N/A	S	110 Volt Outlets .....	5	5	5	5	8
Front Dinette .....	S	—	S	S	S	Range Hood with Light .....	—	—	—	—	S
Side Dinette .....	—	S	—	—	—	<b>GAS</b>					
Separate Bathroom Area .....	—	—	S	S	S	3 Burner Range and Cover .....	S	S	S	S	S
Counter Space Sq. Ft. ....	14.5	22	13	17	16	20 Lb. LP Gas Bottle .....	S	S	S	S	S
Kitchen Counter Height .....	36	36	36	36	29.5	<b>WATER</b>					
Number of Drawers .....	3	3	1	6	2	10 Gallon Fresh Water Tank .....	S	S	S	S	—
Wardrobe .....	—	—	—	S	S	20 Gallon Fresh Water Tank .....	—	—	—	—	S
Fire Extinguisher .....	S	S	S	S	S	Hot Water Heater .....	—	—	—	—	S
Ice Box .....	S	S	S	S	S	City Water Hookup .....	S	S	S	S	S
<b>EXTERIOR FEATURES</b>											
ABS Solid State Construction .....	S	S	S	S	S	Demand Water Pump .....	—	—	S	S	S
Wide 26" Entrance Door .....	S	S	S	S	S	<b>OPTIONS</b>					
¾" T&G Plywood Floor .....	S	S	S	S	S	Refrigerator 12V/Gas .....	O	O	O	O	O
Aluminum Gear Lift System .....	S	S	S	S	S	19000 BTU Furnace .....	O	O	O	O	O
4 Attached Leveling Legs .....	S	S	S	S	S	Flush Toilet .....	—	—	O	O	O
Deluxe Wheel Discs .....	S	S	S	S	S	Air Conditioner .....	O	—	O	O	O
Safety Chains .....	S	S	S	S	S	Spare Tire and Cover .....	O	O	O	O	O
Large Tinted Sliding Windows .....	S	S	S	S	S	Privacy Curtains .....	O	O	O	O	O
Square Foot Windows .....	62	62	62	62	51	Canopy .....	O	O	O	O	O
Window Screens .....	6	6	7	7	6	Screen Room .....	O	O	O	O	O
Seamless One Piece Roof .....	S	S	S	S	S	* Standard Equipment with all systems dry.					

## One of Apache's Outstanding Features is Not a Tent

It's generally thought that a folding trailer utilizes tenting to surround the bed and upper walls. The Apache Solid State construction eliminates the inherent problems with tenting. Apache's tough Rovel Thermo-plastic is not subject to shrinking, seams tearing, mildew or broken zippers. Rugged Rovel gives you a stable, dry, comfortable and secure place for you and your family and only Apache gives you this solid security in the bed ends where you sleep.

Apache's attention to solid construction doesn't stop there. The supporting structure of the body and roof is aluminum, not wood or styrofoam touted as laminated construction. It's easy to get in and out of an Apache which has the widest door in the industry. Notice the high, easy to work at counter tops. The list goes on and on. Look Apache over carefully, try to compare. You'll find there is no comparison. Honest Injun.



# APACHE™

Apache Sales Corp.  
Dryden, Michigan 48428

APACHE Sales Corp. reserves the right to make changes at any time, without notice, in prices, colors, materials, equipment, specifications and models, and to discontinue models or make changes without obligation regarding previous models. Some items shown in product illustrations are extra-cost options.

